

CRISMA



Report on CRISMA workshops

Marie-Christine Bonnamour, PSCE,
Hanna Honkavuo, ESC,
Robert Miskuf, PSCE

4.9.2015



This project has received funding from the European Union's Seventh Framework Programme for research, technological development and demonstration under grant agreement no 284552.



This project has received funding from the European Union's Seventh Framework Programme for research, technological development and demonstration under grant agreement no 284552 "CRISMA"

Deliverable No.		D62.7	
Subproject No.	SP6	Subproject Title	
Work package No.	WP62	Work package Title	CRISMA Events, Workshops and Training
Authors		Marie-Christine Bonnamour (PSCE), Hanna Honkavuo (ESC), Robert Miskuf (PSCE)	
Status (F = Final; D = Draft)		F	
File Name		CRISMA_D627_final.pdf	
Dissemination level (PU = Public; RE = Restricted; CO = Confidential)		PU	

Contact	Anna-Mari.Heikkila@vtt.fi Crisma.Coordinator@vtt.fi
Project	www.crismaproject.eu

Keywords	Workshop
Deliverable leader	Name: Marie-Christine BONNAMOUR Partner: PSCE Contact: mc.bonnamour@psc-europe.eu
Contractual Delivery date to the EC	31.5.2015
Actual Delivery date to the EC	4.9.2015

Disclaimer

The content of the publication herein is the sole responsibility of the publishers and it does not necessarily represent the views expressed by the European Commission or its services.

While the information contained in the documents is believed to be accurate, the authors(s) or any other participant in the CRISMA consortium make no warranty of any kind with regard to this material including, but not limited to the implied warranties of merchantability and fitness for a particular purpose.

Neither the CRISMA Consortium nor any of its members, their officers, employees or agents shall be responsible or liable in negligence or otherwise howsoever in respect of any inaccuracy or omission herein.

Without derogating from the generality of the foregoing neither the CRISMA Consortium nor any of its members, their officers, employees or agents shall be liable for any direct or indirect or consequential loss or damage caused by or arising from any information advice or inaccuracy or omission herein.

Table of Contents

TABLE OF CONTENTS	III
LIST OF FIGURES	IV
GLOSSARY OF TERMS	V
EXECUTIVE SUMMARY	VI
1. BEFORE THE WORKSHOP	1
1.1. Preparation	1
1.2. Logistics.....	1
1.3. Promotion	1
1.3.1. Website	1
1.3.2. Targeted invitations	2
2. THE WORKSHOP	3
3. OVERVIEW OF REGISTERED PARTICIPANTS	8
APPENDIX (A) – AGENDA OF THE CRISMA WORKSHOP IN LEVI	9

List of Figures

Figure 1: Invitation in CRISMA website.	2
Figure 2: Picture of Pilot A presentation – evacuation in the North Savo in January 2015.....	4
Figure 3: Picture of Pilot A presentation – Affected area in the Pilot A simulations.....	4
Figure 4: Usage of CRISMA Application in the Pilot A scenario.	5
Figure 5: The Pilot A mock-up was presented.....	5
Figure 6: A view of the simulation results in the Pilot A mock-up.....	6
Figure 7: A view to the CRISMA Preparedness Planner.....	6
Figure 8: CRISECON GUI for the basic information of the scenario.....	7
Figure 9: CRISECON GUI of the transportation costs.	7

Glossary of terms

Term	Definition
CRISMA	EU funded FP7 integration Project: "Modelling crisis management for improved action and preparedness"

Executive Summary

In the course of the CRISMA project, three workshops with end-users were organised. These workshops presented a good opportunity to generate interest on the CRISMA integrated modelling system with the objective to demonstrate to end-users CRISMA products and its potential services. The final end-result of these workshops was the high awareness of the CRISMA solution among the most relevant end-user groups.

The third CRISMA workshop with end-users took place on 12th February 2015 in Levi, Finland. The workshop focused on promoting the CRISMA tool and its various use cases, drawing upon interesting case studies as well. The workshop was organised by CRISMA project partner Emergency Services College (ESC). The present document reports on this third workshop and its arrangements.

1. Before the workshop

1.1. Preparation

The preparation for this workshop started in September 2014. A core group emanating from ESC (Emergency Services College), VTT as well as PSCE (Public Safety Communication Europe) was discussing in order to define the most suitable way to keep the workshop. The workshop was planned to start with welcome and objects of the event as well with an introduction round of all participants to collect their expectations. After the general presentations, the focus was in presenting different ways to use CRISMA tool. After the coffee break, the workshop was planned to give examples of different CRISMA application via Pilot A, covering Pilot A scenario, Pilot A mock-up, Preparedness planner and CRISECON¹.

Most of the details were agreed via emails and telcos between ESC and coordinator. Also the presenters were informed in the Pilot A online-conferences.

The Agenda of the CRISMA Levi Workshop is attached as Annex A.

1.2. Logistics

The third CRISMA end-users workshop was held on 12 February 2014 at Levi, in Kittilä, Finland. It was arranged at the Hotel Hullu Poro, from 12:00 till 16:30.

The workshop was aimed to bring together crisis management stakeholders - especially members of the end-user community like different authorities and agencies, police, rescue services etc. - to learn about the project's benefits and have a discussion on how CRISMA tool can be used by the authorities in their own work.

ESC was in charge of all logistical aspects including handling the venue, catering, sound system, taking photos, preparation of conference material (signs, roll up, list of participants, documentation, nameplates, pin boards, etc.).

1.3. Promotion

One of the most important prerequisites for the successful event was to attract relevant audience.

More than the number of participants, it was considered essential to have participants with a good mix of different backgrounds. To attract relevant stakeholders, project partners disseminated invitations via different communication channels including CRISMA websites and targeted and personalised invitations sent via email and face-to-face.

1.3.1. Website

The constantly updated permanent website announcements were made available at www.crismaproject.eu (homepage & news sections).

¹ <https://crisma-cat.ait.ac.at/component/CRISECON%20GUI>

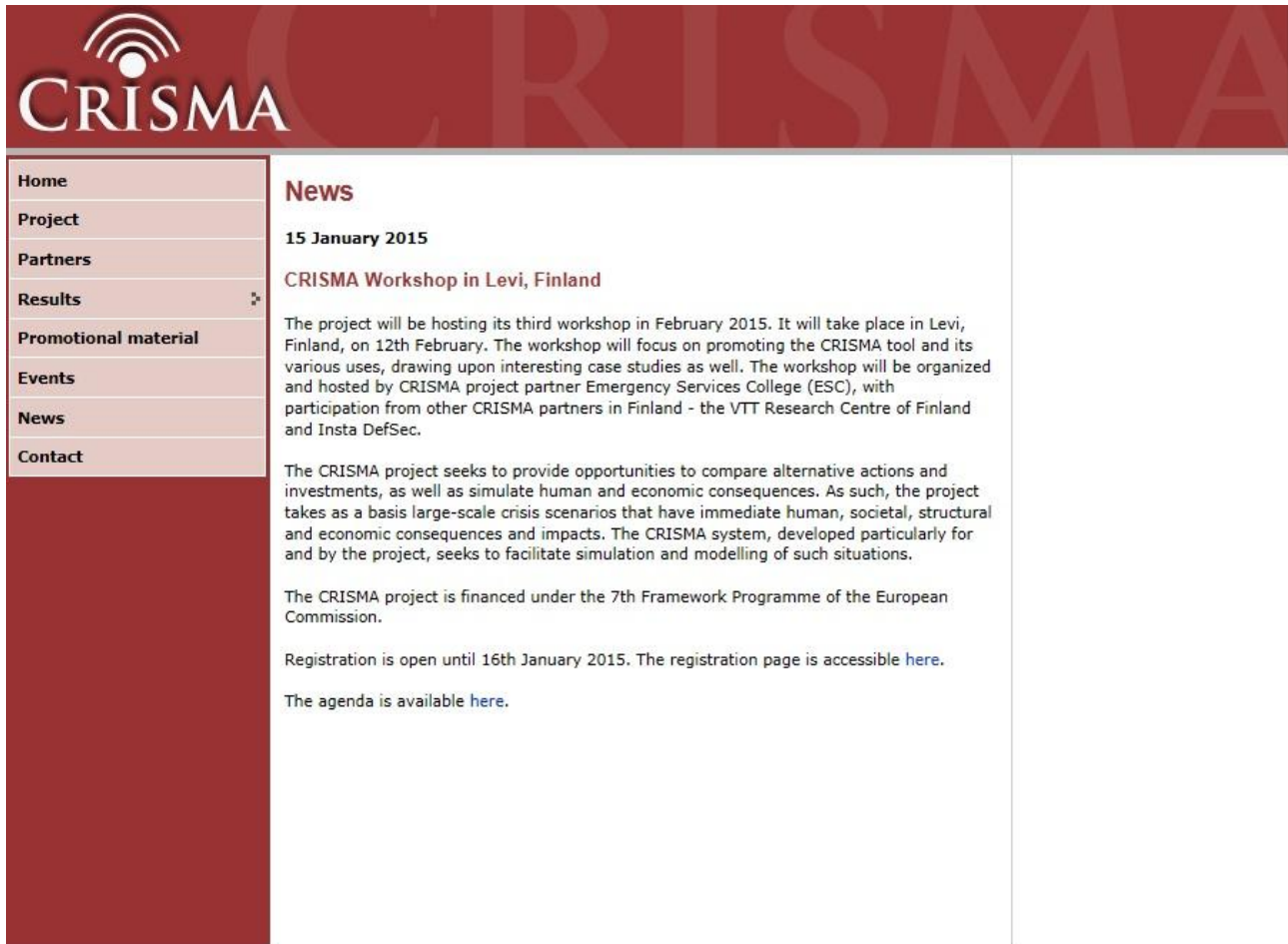


Figure 1: Invitation in CRISMA website.

1.3.2. Targeted invitations

The invitations have been sent by emails to target audience including: participants (from Finland, Sweden, Norway and Russia) of the Barents Rescue Exercise planning conference (held in Levi before CRISMA workshop); participants of the CRISMA Rovaniemi workshop in 2012; participants of the CRISMA Kemi workshop in 2014; and different organisations with responsibilities in preparedness planning in Lapland.

When necessary, invitations were translated into Finnish in order to better communicate with potential participants.

2. The workshop

The purpose of this event was to gather relevant stakeholders, inform them about the CRISMA and its results, and through interactive process obtain their views on the potential exploitation of the final tools. After the opening by Hannu Rantanen from ESC, Anna-Mari Heikkilä (VTT) continued with the general CRISMA presentation and the presentation of different ways to use the CRISMA tools. The workshop continued with a presentation given by Ari Kosonen (Insta DefSec Ltd) who presented the Preparedness Planner. Finally the floor was given to Markus Jähi (VTT) who presented CRISECON-tool for evaluation of economic impacts.

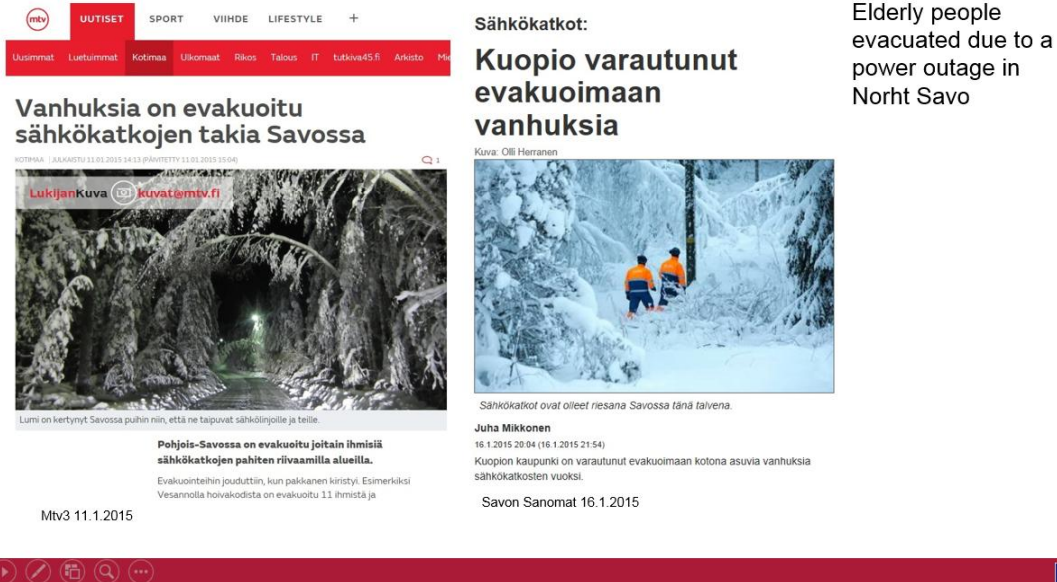
Discussion took place throughout the event:

- It was emphasised that the tool is meant mainly for the planning phase, not for the real time operation. Using the CRISMA tools it is possible to compare and view e.g. how different situations affect different actors on the field, how the evolution of the situation impacts vulnerabilities in different areas, what economical impacts different decisions have, etc.
- The tool was seen challenging in a way that it is made for the whole Europe. It was brought up that the CRISMA tools can be customised for the needs of end user organisations.
- It was seen good that the economic impact model does not need exact figures – in many cases coefficients are simple enough.
- As an example of more specific discussions, the scarcity of food was raised as a critical outcome of an extreme winter storm with a long power black out in Lapland. With CRISMA this kind of aspects can also be simulated for improved preparedness and action plans.
- The challenges of security sensitive networks and their limitations were raised. Ari Kosonen explained how these obstacles can be overcome by customisation.

Markus Jähi (VTT) also presented the CRISMA Catalogue and what is there to be found. The participants were encouraged to explore the Catalogue by themselves too.

Some illustrations of the material presented are included as Figures 2–9.

Evacuation in North Savo



Vanhuksia on evakuoitu sähkökatkojen takia Savossa

Sähkökatkot: Kuopio varautunut evakuoimaan vanhuksia

Elderly people evacuated due to a power outage in North Savo

Pohjois-Savossa on evakuoitu joitain ihmisiä sähkökatkojen pahiten riivaamilla alueilla.

Juha Mikkonen

Savon Sanomat 16.1.2015

Figure 2: Picture of Pilot A presentation – evacuation in the North Savo in January 2015.

Affected area

- Kemi - Tornio
- long distances
- aging population in sparsely populated areas
- the scarcity of resources that are planned for the normal conditions
- the additional load formed by tourist centers like ski resorts

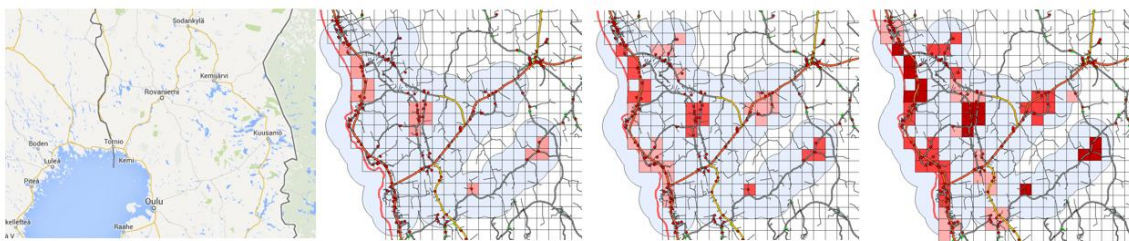


Figure 3: Picture of Pilot A presentation – Affected area in the Pilot A simulations.

Pilot A V2 scenario phases

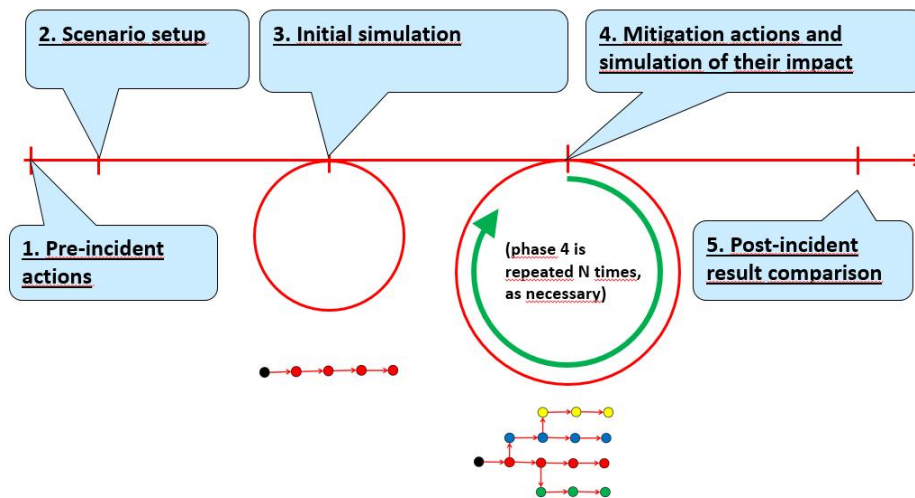


Figure 4: Usage of CRISMA Application in the Pilot A scenario.

Setting the initial power blackout area

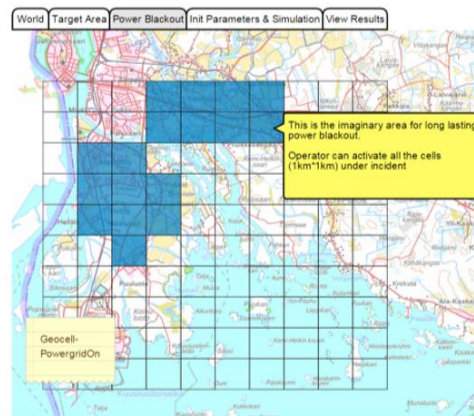


Figure 5: The Pilot A mock-up was presented.

Simulation results in WS7'

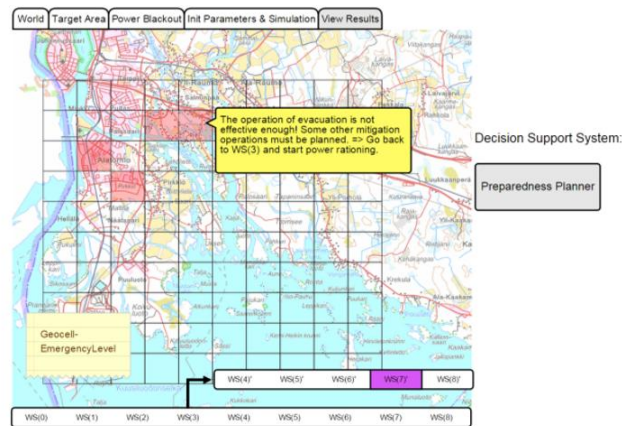


Figure 6: A view of the simulation results in the Pilot A mock-up.

Preparedness Planner: Executing preparedness plan

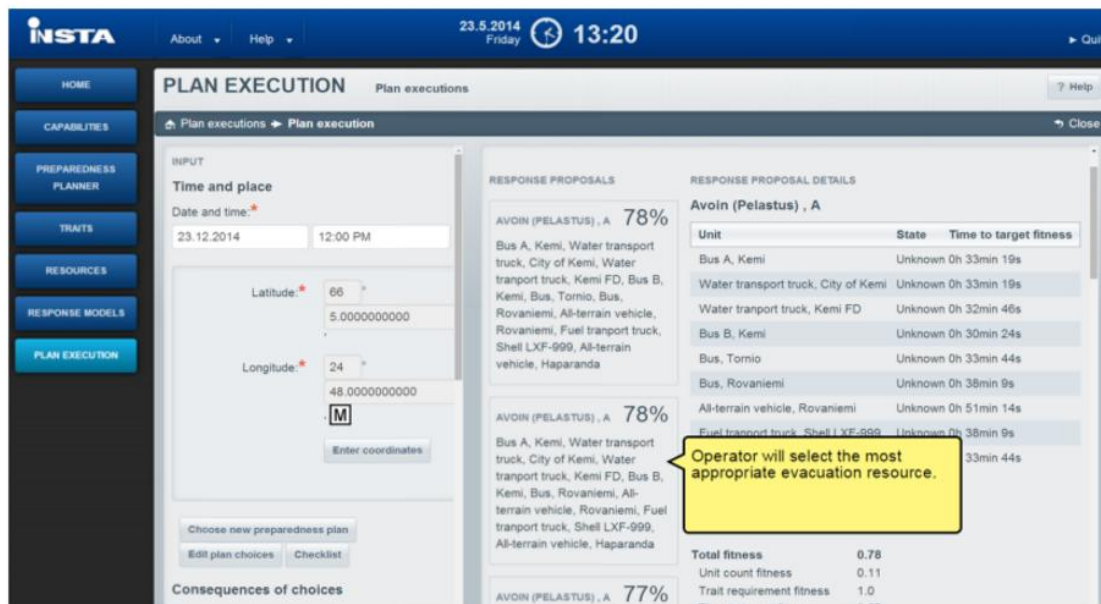


Figure 7: A view to the CRISMA Preparedness Planner.

About this tool **Basic information** Analysis selection Scenario description Economic impacts Results Simulation

Person responsible for the assessment:
 Contact person:
 Date:
 Application area:
 Decision background and goal:

 Viewpoint of the Assessment:

 Discount rate used in calculations (%):

Figure 8: CRISECON GUI for the basic information of the scenario.

About this tool Basic information Analysis selection Scenario description **Economic impacts** Results Simulation

Mitigation measures* Human health* Buildings* Lifelines* Nature* **Agriculture** Rescue and emergency operations

Transportation costs Staff resources* Accommodation costs

Calculate total transportation costs

Vehicle type	Simulation id	World state id	Cost category	<input checked="" type="checkbox"/> Cost/km	Total km	Total transportation cost	
Transport_Resource_Pool_Rova...	169	1758	transportation	500	73	36,500.00	<input type="button" value="× Delete"/>
Bus_020_Rovaniemi	169	1758	transportation	15	65	975.00	<input type="button" value="× Delete"/>
Peruayksikkö	169	1757	transportation	0	500	0.00	<input type="button" value="× Delete"/>
Passanger_Train_Seinäjoki	169	1758	transportation	200	344	68,800.00	<input type="button" value="× Delete"/>
Transport_Resource_Pool_Kemi	169	1758	transportation	400	19	7,600.00	<input type="button" value="× Delete"/>
Bus_021_Rovaniemi	169	1758	transportation	24	65	1,560.00	<input type="button" value="× Delete"/>

Figure 9: CRISECON GUI of the transportation costs.

3. Overview of registered participants

For the CRISMA Levi workshop, the registered Finnish and Norwegian participants represented authorities and decision-makers on the national and municipality level, police and rescue services, and regional agencies like the Transport Agency.

CRISMA partners from ESC, Insta DefSec and VTT were represented.

APPENDIX (A) – Agenda of the CRISMA workshop in Levi



CRISMA workshop on Thursday 12 February 2015 in Levi, Finland

Hotel Hullu Poro, Rakkavaarantie 5, Levi

Agenda

- 12.00 Welcome and objectives of the event
- 12.30 Introduction to CRISMA project
- 13.00 Different uses of CRISMA tool
- 14.00 Coffee
- 14.15 Examples of different CRISMA applications
- 16.00 Summary of the workshop
- 16.30 Workshop ends

Heikkilä Anna-Mari, VTT Technical Research Centre of Finland Ltd
Honkavuo Hanna, Emergency Services College
Jähi Markus, VTT Technical Research Centre of Finland Ltd
Kosonen Ari, Insta Def Sec Oy
Rantanen Hannu, Emergency Services College

<http://www.crismaproject.eu>